



Your Optical Fiber Solutions Partner™

EZ-Bend® InvisiLight™ In-Living Unit Solution

Installation Instructions with InvisiLight NIU

Revision 5.0

1.0 Overview

The purpose of this document is to outline the process for installing InvisiLight WCC's new InvisiLight NIU. This document assumes that the technician is familiar with fiber handling and understands optimal placement of the FiberJack.

The InvisiLight™ solution enables nearly invisible, fast, plug and play fiber placement into living units. The InvisiLight™ solution consists of a 0.9 mm diameter EZ-Bend® fiber with factory mounted OFS SC-APC connectors on both ends. The InvisiLight™ solution is installed in the grooves between ceilings and walls, baseboards and walls, and vertical corners between walls, since they are easily accessed and naturally protected pathways to route the fiber. The connectorized Fiber assembly is available on small diameter spools in lengths of 5, 10, 20, 30, 40 meters (11.5, 33, 66, 99, and 132 feet) to reach into nearly any living unit. For very large residences, two InvisiLight fibers may be placed and connected through an SC-APC adapter enabling routing lengths of up to 244 feet.

Examples of Installed EZ-Bend® InvisiLight™ Solution





A Furukawa Company

2.0 Tools and Components

Installation Tool and adhesive tube (sold separately)



Dispensing Tool



Adhesive tube, nozzles



Loaded with Adhesive Tube

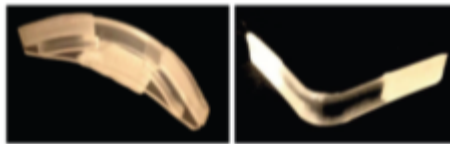
Components

InvisiLight™ Spool with Factory Mounted SC-APC



Inside and Outside Corners to insure proper bend radius of InvisiLight fiber around

Inside Corner mounting tool



Through wall tool



Straight hole plug and cap



Angled hole plug and cap



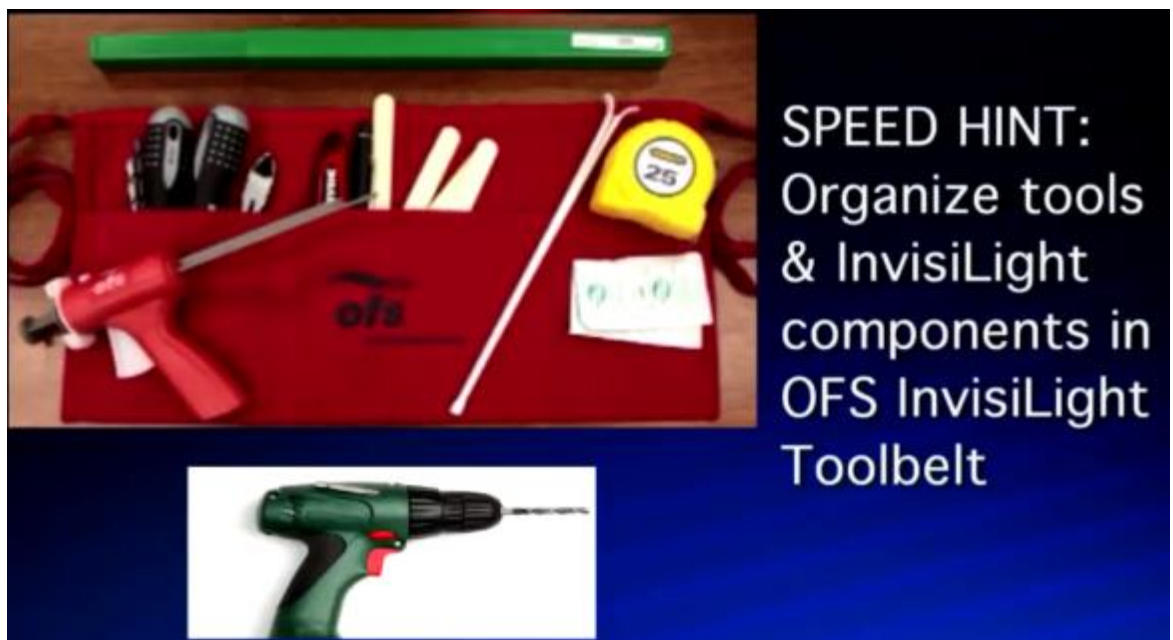
InvisiLight NIU – base, cover, and installation kit.



3.0 Adhesive System Overview

- 3.1 The InvisiLight™ adhesive is a water-based indoor adhesive that is tested to be fully compatible with the InvisiLight fiber. It provides a water-resistant bond without chemical smells, is acid-free, dries clear, and cleans up immediately with soap and water. An MSDS of the adhesive is available from OFS upon request.
- 3.2 Recommended installation surfaces:
 - 3.2.1 Most common construction materials including brick, wood, dry-wall, plaster, wall paper, fabrics and painted surfaces
- 3.3 Not recommended for use on or with:
 - 3.3.1 Metals that will corrode. Mirrors. Natural Marble (could stain) Polyethylene, polypropylene, Nylon™ or Teflon™
- 3.4 Installation conditions
 - 3.4.1 Store adhesive tubes above freezing
 - 3.4.2 Surfaces should be clean and dry
 - 3.4.3 Application temperature >10°C (50°F)
 - 3.4.4 Set Time and repositioning: 10 minutes.
 - 3.4.5 Dry time: 1 to 24 hours (depending on thickness)
 - 3.4.6 Dries clear within 1 – 3 hours depending on thickness.
 - 3.4.7 Non-flammable, flexible solid, water resistant
- 3.5 Safety precautions
 - 3.5.1 Wear gloves and goggles or safety glasses with side shields while applying the adhesive.

4.0 Tool and Component Organization





A Furukawa Company

5.0 Installation Procedure

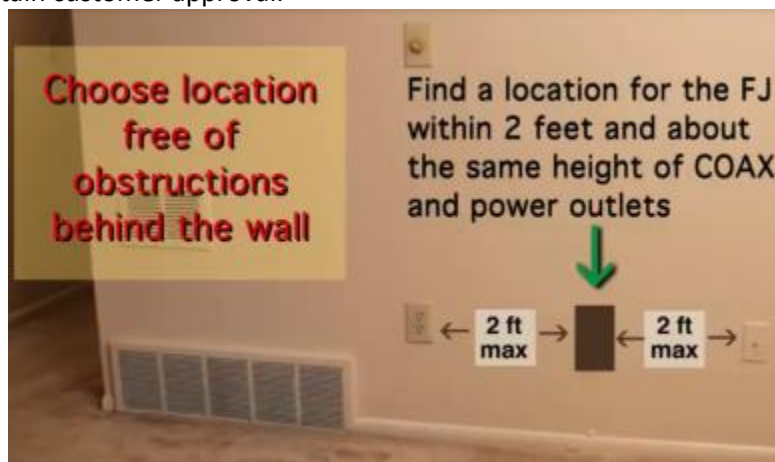
5.1 Determine NIU Location.

- 5.1.1 If possible try to locate the NIU in a less visible area such as in a closet, laundry room, or above a doorframe.
- 5.1.2 The location of the NIU may be dictated by the location of the fiber entry point.



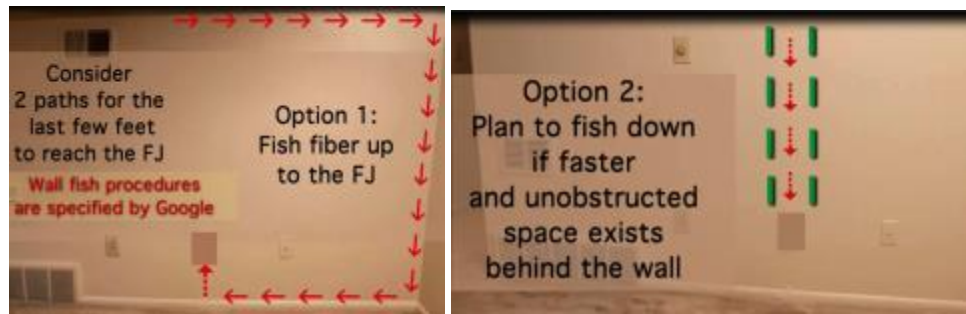
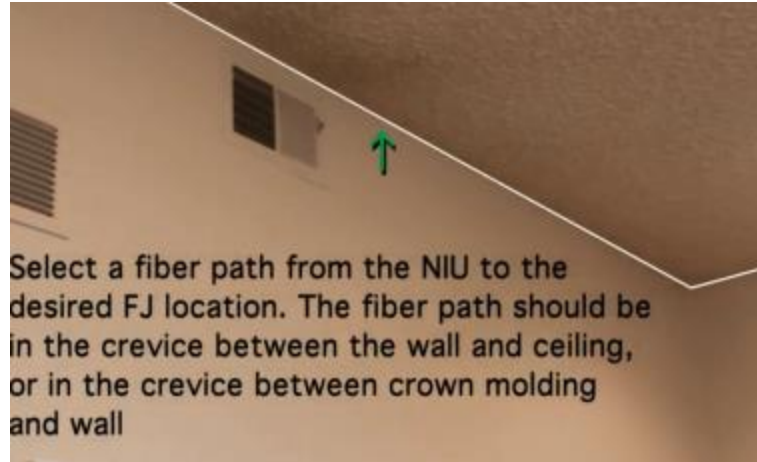
5.2 Determine FiberJack Location

- 5.2.1 Based on the unit layout and customer requirement identify the optimal location of the FiberJack and obtain customer approval.



5.3 Identify fiber path and select InvisiLight kit

- 5.3.1 Identify and review the fiber path between the NIU and FiberJack and discuss the placement of the InvisiLight product with the unit owner and obtain their consent. The pathway may be in the groves between ceilings and walls, ceilings and crown molding, walls and crown molding, walls and door or window molding, and between baseboards and walls. The pathway may also be in the vertical groove at the intersection of 2 walls. Routing the fiber adjacent to the ceiling or crown molding may reduce the need to move furniture. Routing the fiber along baseboards may require furniture or other objects to be moved. The fiber may be routed through interior walls enabling faster installation and shorter path lengths.



- 5.3.2 Select InvisiLight kit with a spool of at least 3 meters (10 feet) longer in length than the measured pathway length. The table below recommends the spool length based on the measured pathway. This provides slack to account for measurement inaccuracy and connector replacement if needed, and changes in wall module location.

Measured Fiber Pathway Length	Spool Length for Installation
up to 2 meters (6.5 feet)	5 meters (16.5 feet)
up to 7 meters (23 feet)	10 meters (33 feet)
up to 17 meters (56 feet)	20 meters (66 feet)
up to 27 meters (89 feet)	30 meters (99 feet)
up to 37 meters (122 feet)	40 meters (132 feet)
37 – 54 meters (122 – 178 feet)	Concatenate* 40 + 20 or 30 + 30 spools
54 – 64 meters (178 - 211 feet)	Concatenate* 40 + 30 meter spools
64 – 74 meters (211 – 244 feet)	Concatenate* 40 + 40 meter spools

- Two spools may be concatenated (connected together) through a Wall module to achieve a reach of up to 74 meters (244 feet)

5.4 Install InvisiLight NIU Base

- 5.4.1 Secure the InvisiLight NIU to the wall at the desired location with screws and anchor posts included in the hardware kit.

- 5.4.1.1 If microduct must enter from the rear of the NIU it will need to be attached with the cable ties included to the NIU prior to mounting the NIU.



- 5.4.2 Attach tape to the edge of the duct so that some of the tape is past the end of the duct edge. Attach the duct to one of the six ports and secure with the cable ties.



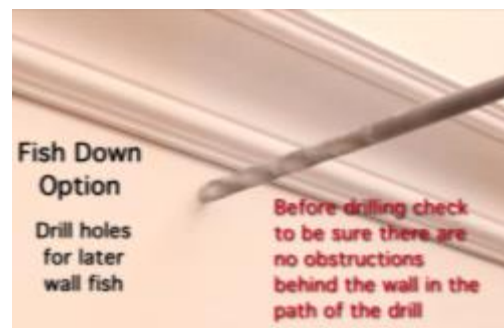
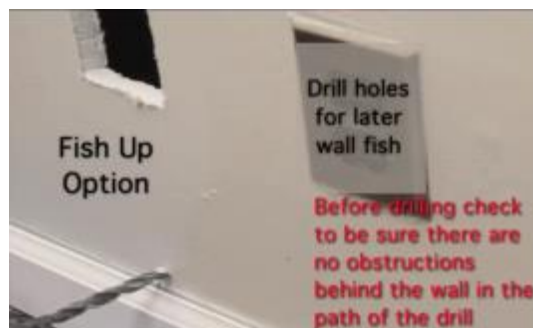
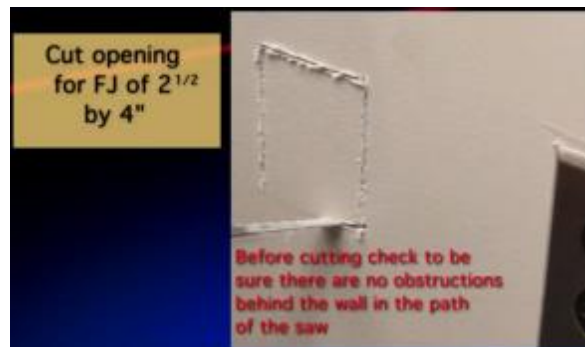
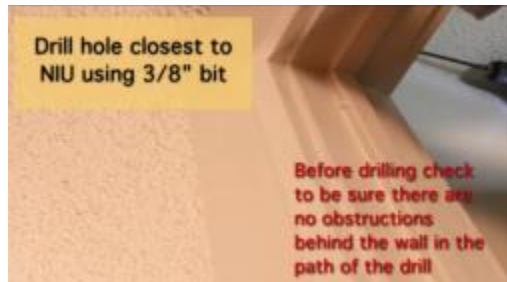
- 5.4.3 Route the slack cordage exiting the micro-duct in the base of the NIU and clean and plug in the SC-APC connector into the adapter. The spool is then placed in the module.



- 5.4.4 Do not attach the cover until the end of the installation. Unless the wall material is very weak, the module is light enough (<1 lb) that it does not need to be directly screwed into a wall stud.

5.5 Drill Holes and Cut FJ Opening

5.5.1 Wall Penetrations - If the NIU is located in different room from the FiberJack, wall penetrations may be required. Utilizing a 3/8" (9mm) drill bit make the necessary penetrations as close as possible to the corners of the ceiling or walls. **CAUTION: Prior to drilling check to be sure there are no electrical wires, pipes, or any other obstacles that may be in the path of the drill. If such obstacles are present move the hole location to where no obstacles exist, or route the fiber around the wall.** Drill the first hole nearest to the NIU. Clean up debris resulting from drilling.

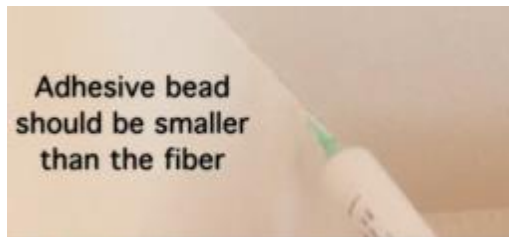


5.6 Apply Adhesive and Corner Protectors Along Entire Path

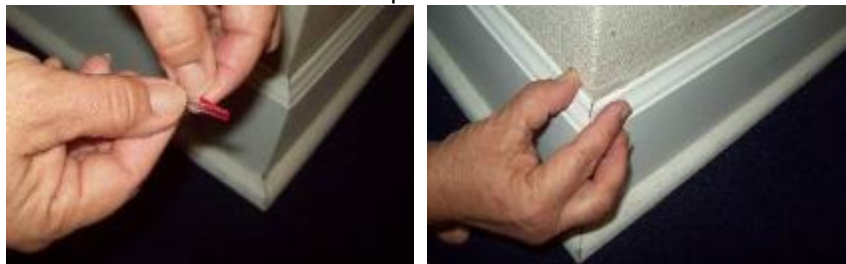
5.6.1 Attach adhesive tube to adhesive applicator. Remove cap from adhesive tube and screw on the green nozzle supplied.



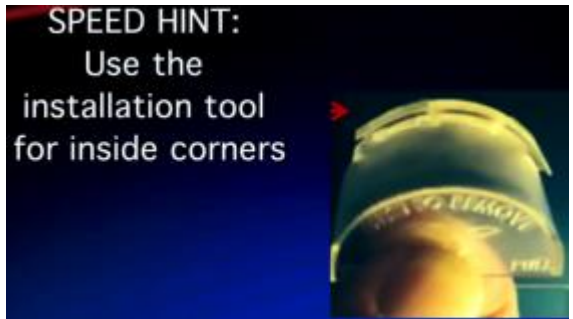
- 5.6.2 Work from the FiberJack toward the NIU by applying very small 1 mm line of adhesive (about the same diameter as the fiber) along the entire pathway. Have a small wet towel to remove excess adhesive if needed. Apply corner protectors at ALL outside corners are you reach them, and at all inside corners where 2 moldings meet as shown below.

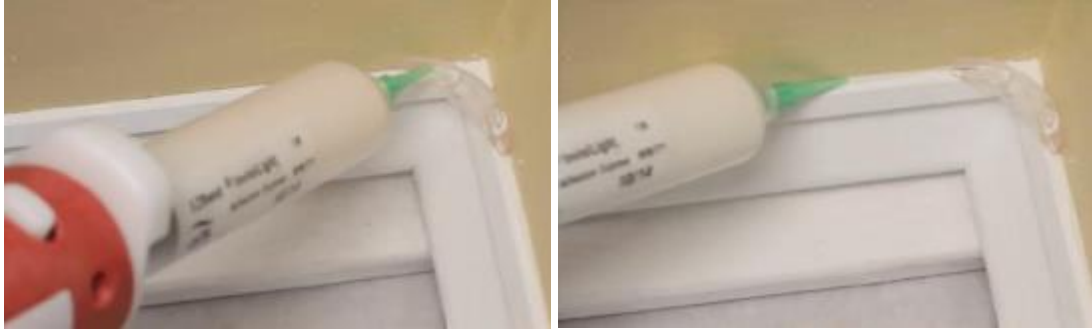


Install the plastic flat outside and inside corners provided with the InvisiLight kit, on your planned route. The corner anchor tool may be used to press on the inside corners in tight corners. The EZ-Bend[®] fiber allows for up to 25 outside and 25 inside corners.



Remove adhesive backing then press on corner protectors.

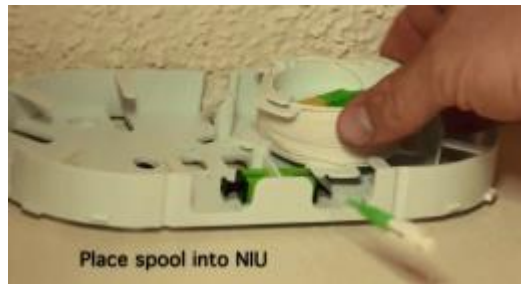




Fiber must be pressed into adhesive in less than 20 minutes. After adhesive is applied move immediately to the next step.

5.7 Spool out fiber from the NIU to the FiberJack location

5.7.1 Place the spool into the NIU (shown below) and verify that it spins freely. Carefully remove the tape holding the outside end connector to the spool. The spool will be shipped with a green grip loosely slid onto the connector end. Remove the green grip shown below on the right and save it for later placement onto the connector prior to plugging the connector into the FiberJack.



5.7.2 Unspool the fiber toward the FJ location



5.7.3 Use “through wall” tool as shown below to push or pull connector through the interior wall holes until connector is at the FiberJack location. For each wall hole, seat the connector in the tool, push through the wall, and rotate the tool ½ turn to release the connector. Remove the tool from the wall.



5.7.4 FJ wall fish procedure. If fishing fiber behind the wall to the FJ follow this process. Be careful not to pull the fiber tightly or kink the fiber behind the wall.

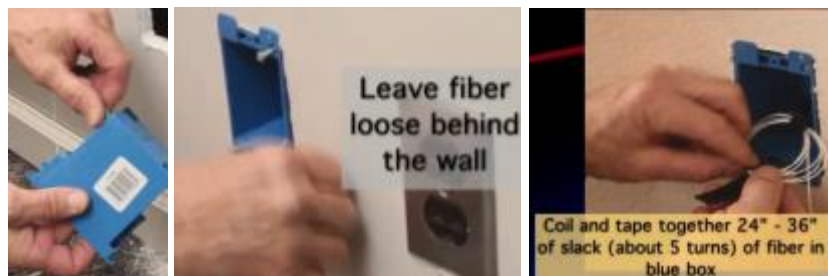


5.7.5 Use blue painter's tape as needed to help keep the InvisiLight fiber off the floor. This not required but may help in some installations.



5.8 Install blue box

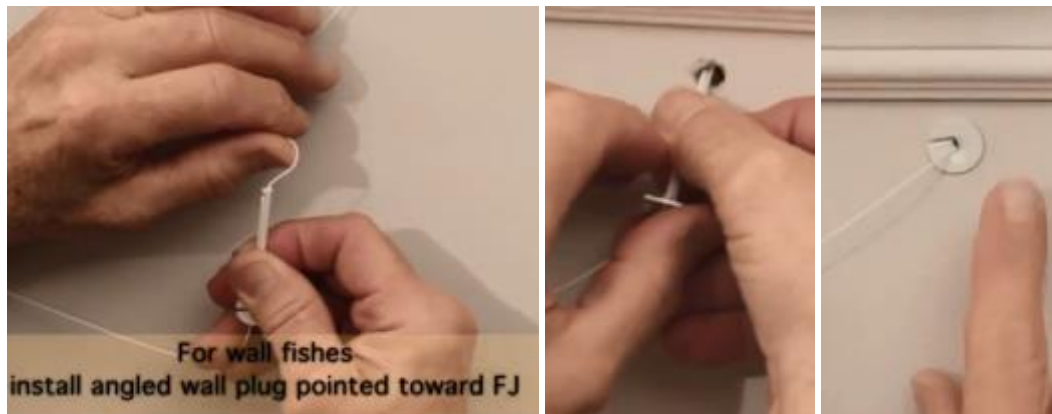
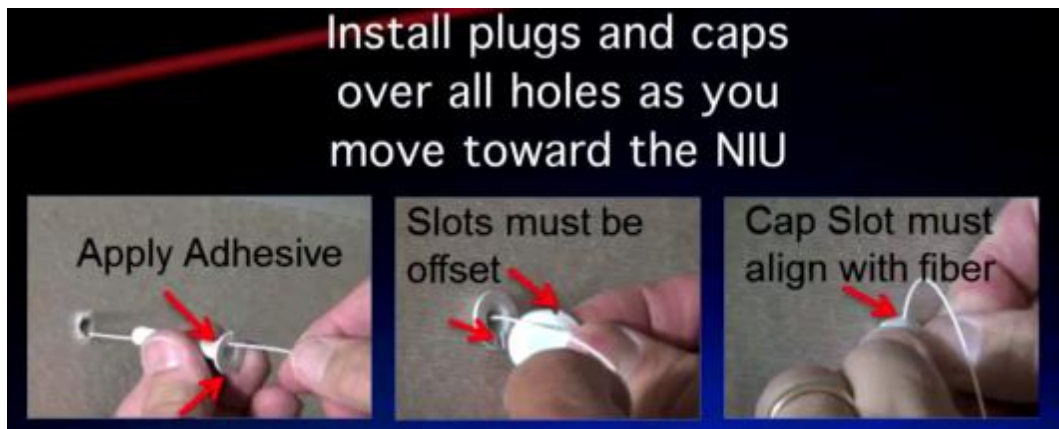
5.8.1 Route the InvisiLight connector and fiber through the blue box and coil slack. **Do not pull fiber tight behind the wall at any time in the process.**

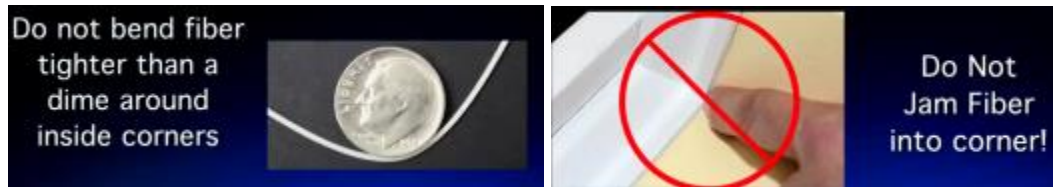
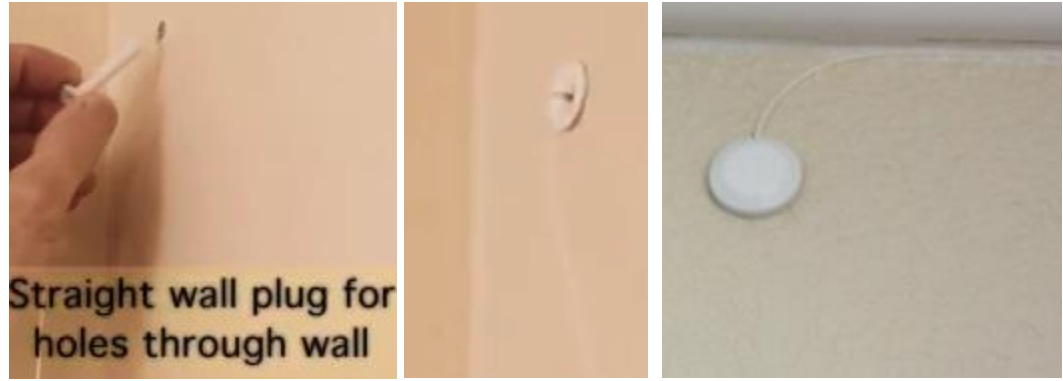


- 5.9 Press fiber into adhesive and install hole plugs and caps.
- 5.9.1 Press fiber into adhesive starting from the FJ, pushing the slack toward the NIU. Wear gloves while touching the adhesive.



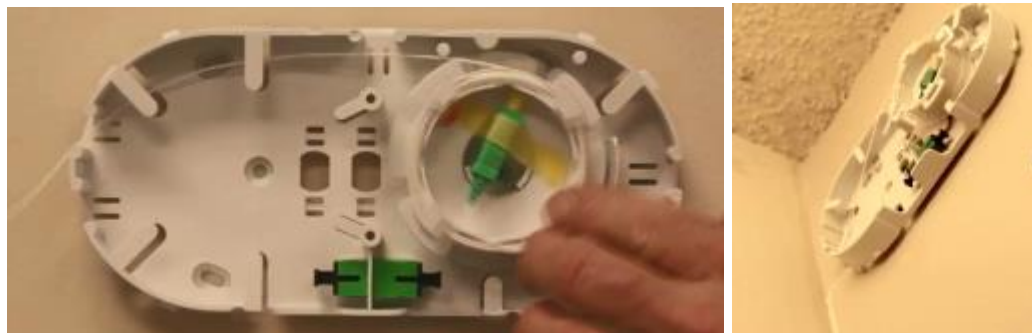
- 5.9.2 Install wall plugs and caps as you reach them, pushing the slack toward the NIU.





5.10 At NIU Dress Fiber, Clean and Plug In Connectors, and Install Cover

5.10.1 Spool up excess slack and Glue Fiber up to NIU



5.10.2 Remove dust caps from connectors, clean the fiber connector ends with Cletop cleaner, and plug in connectors. Coil and store jumper cordage.



5.10.3 Install Cover using white screw provided



5.11 Mount and Connect Fiber Jack (FJ)

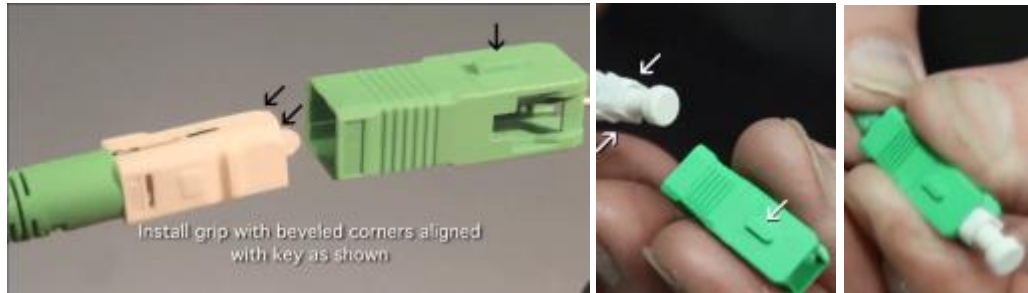
5.11.1 Install FJ back plate. Be careful not to pinch fiber.



5.11.2 Attach back plate using correct screws supplied



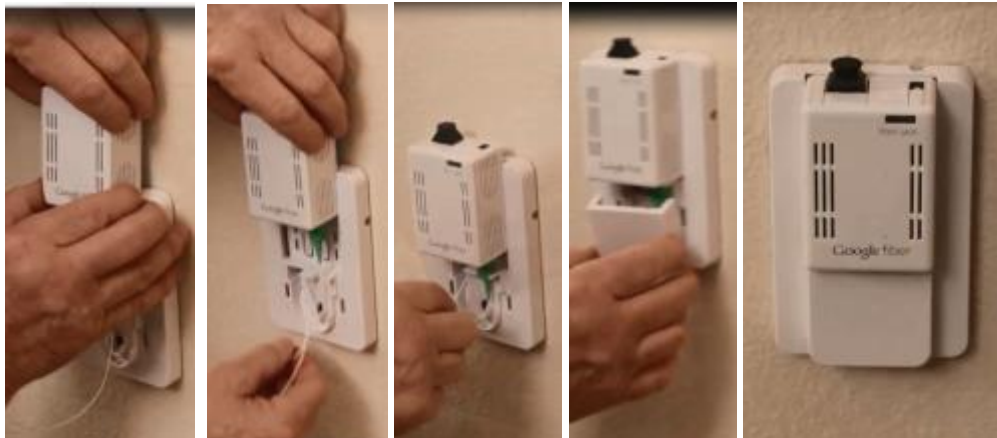
5.11.3 Snap green grip on to connector. Grip key and beveled corners of white connector body should be facing up. An audible click will be heard as grip is fully seated. Grip should slide back and forth after placement onto the connector.



5.11.4 Remove dust cover from connector, clean the fiber connector end with Cletop cleaner and connect to the FiberJack. Grip key should face toward you.



5.11.5 Slide Fiber Jack on to back plate and snap on cover. Be careful not to pinch fiber.



5.12 Finished Installation



5.13 Power test for proper light levels at the FiberJack.

6.0 Trouble-shooting and Repair

6.1 Trouble-shooting: If test results show excessive loss or no light, inject a “red light” into the connector on either end of the Fiber and the red light will visibly leak at any point where excessive loss or a fiber break exists.

6.2 Repair procedures depending on location of fiber break. (NOTE: Fiber breaks are very rare and will not occur if the InvisiLight is installed in accordance with instructions.)

6.2.1 Fiber is broken just behind the connector on either end

6.2.1.1 Remove the connector from the adapter

6.2.1.2 Cut off the connector behind the break.

- 6.2.1.3 Replace it with a company approved fusion splice-on
- 6.2.1.4 Plug in the new connector into the adapter.

- 6.2.2 Fiber is broken near the FiberJack
 - 6.2.2.1 Cut off the fiber past the fiber break, and replace it with a company approved fusion splice-on SC-APC pigtail or connector with length sufficient to reach the FiberJack.
 - 6.2.2.2 If a pigtail is used attach the fusion splice protector to the wall or molding with tape or adhesive.
 - 6.2.2.3 Attach loose fiber to the wall or molding with adhesive as needed.

- 6.2.3 Fiber is broken near the NIU
 - 6.2.3.1 Unplug the connector from the NIU adapter.
 - 6.2.3.2 Unspool enough slack to reach the break plus enough additional to perform fusion splicing.
 - 6.2.3.3 Fusion splice the broken end to the slack end.
 - 6.2.3.4 Attach the fusion splice protector to the wall or molding with tape or adhesive, and roll back the remaining slack onto the spool.
 - 6.2.3.5 Attach loose fiber to the wall or molding with adhesive as needed.
 - 6.2.3.6 Plug in the connector into the NIU adapter and re-secure the spool into place.

- 6.2.4 Fiber broken more than a few feet from either end
 - 6.2.4.1 Unplug and cut-off the connectors and install another InvisiLight™ fiber spool over the same path as the existing fiber.



A Furukawa Company

7.0 ORDERING INFORMATION

WCC Kits include the follow components:		Qty
a) Connectorized SCA/SCA 900um fiber spool		1
b) Wall mount WCC module e/w SCA adapter		1
c) Inside corner protectors		6
d) Outside corner protectors		6
e) Hole plugs and caps		4
g) Tube 30ML Adhesive (12 month expiration)		1
NVSLGHTC-D-SCASCA-MODWCC KIT-05M-01/EA		301092342
NVSLGHTC-D-SCASCA-MODWCC KIT-10M-01/EA		301092359
NVSLGHTC-D-SCASCA-MODWCC KIT-20M-01/EA		301089546
NVSLGHTC-D-SCASCA-MODWCC KIT-30M-01/EA		301089553
NVSLGHTC-D-SCASCA-MODWCC KIT-40M-01/EA		301089561

NVSLGHTC-WCC MODULE E/W SCA ADAPTER	
NVSLGHTC-WCC MODULE E/W SCA ADAPTER	301092193

NVSLGHTC-ADHESIVE (includes 2 tips)	
NVSLGHTC-TUBE, 30ML ADHESIVE	301083184

"Try Me Out Kit" includes the follow components:		Qty
a) Connectorized SCA/SCA 900um fiber spools 30 meters		10

8.0 Confidentiality

The Instruction is OFS Fitel, LLC (“OFS”) proprietary and confidential, the information in this instruction is furnished to Google Fiber, Inc. for its use.

Google shall keep the instruction confidential and not disclose it to a third party, except to its employees, agents and subcontractors with a “need to know”. The information in this instruction will be used to install product for Google’s use. The written agreement to keep the information confidential has been approved by both companies.

9.0 Safety

Make sure to comply with your employer or contractor training and safety procedures and all government safety regulations.

The adhesive used with the InvisiLight™ Solution may cause allergic skin reaction. Wear protective gloves and safety goggles and avoid breathing vapors.

Do not look into any fiber optic connector as eye damage may result.



A Furukawa Company

10.0 Disclaimer

This installation instruction is furnished on an “as is, where is” basis. OFS disclaims any and all liability, representation or implied, regarding this instruction, its content and use to the fullest extent permitted by law.